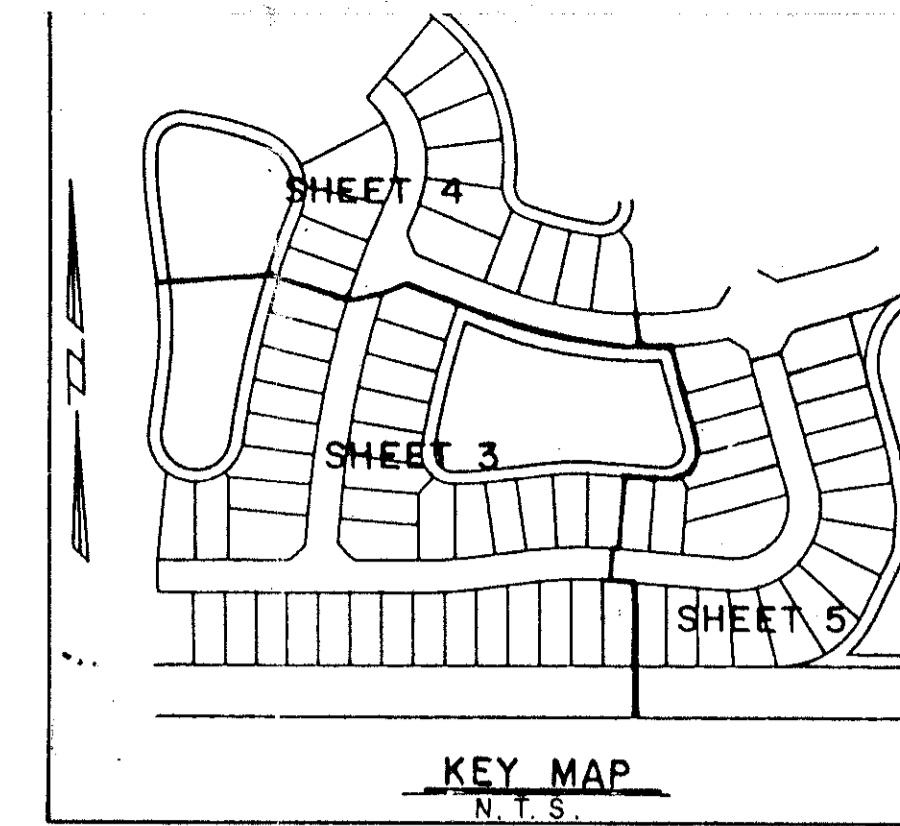
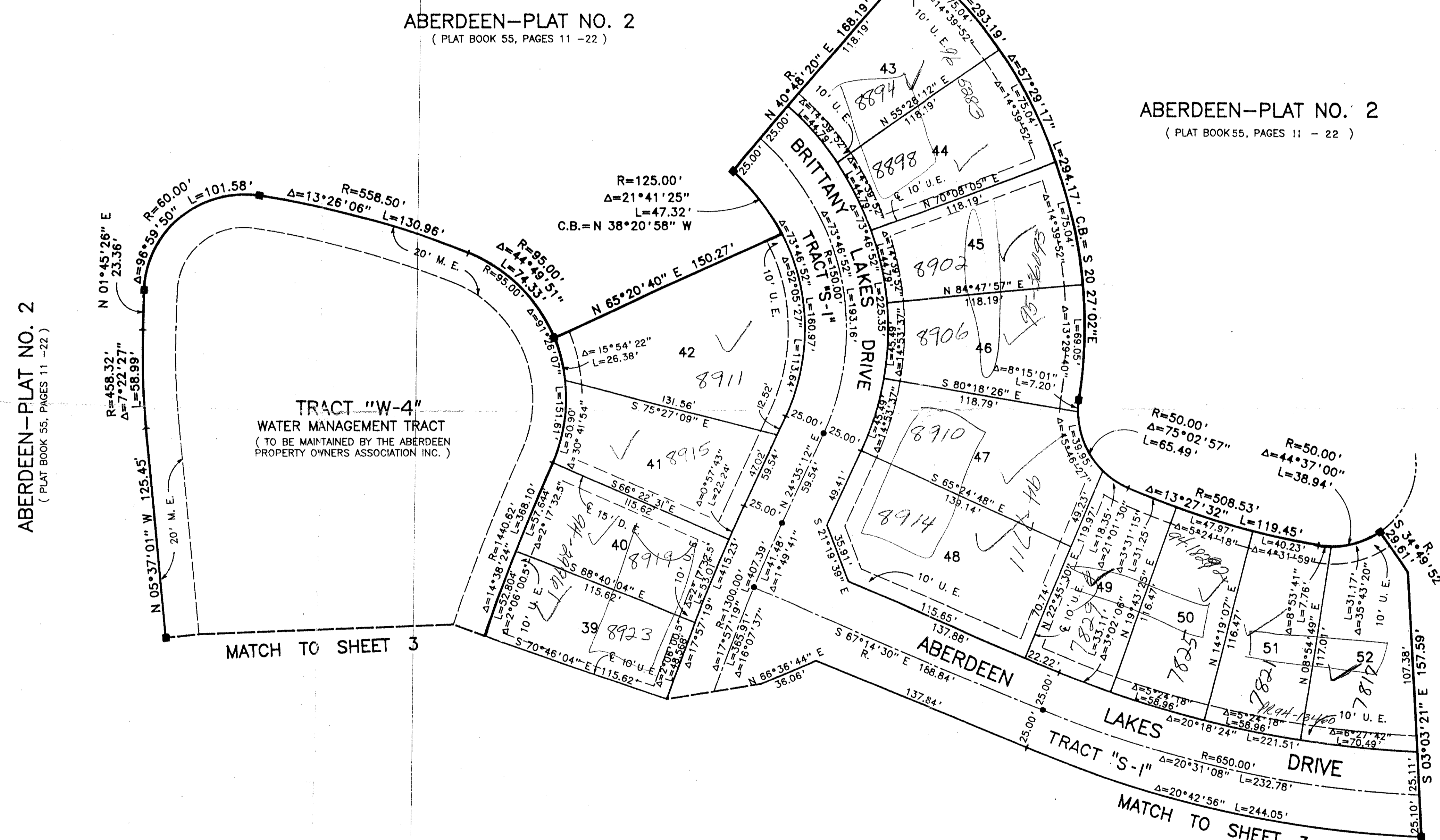


A PORTION OF A P.U.D.
 LYING IN SECTION 16, TOWNSHIP 45 SOUTH, RANGE 42 EAST
 BEING A REPLAT OF A PORTION OF ABERDEEN - PLAT NO. 2 AS RECORDED IN PLAT
 BOOK 55, PAGES 11 THRU 22, PUBLIC RECORDS OF PALM BEACH COUNTY, FLORIDA.
 SHEET 4 OF 5 AUGUST ,1993



7/131

STATE OF FLORIDA
 COUNTY OF PALM BEACH
 This Plat was filed for record at _____
 M. this _____ day of _____ 19____
 and duly recorded in Plat Book No. _____
 on Page _____
 Dorothy H Wilken, Clerk of the Circuit Court
 By _____ D.C.



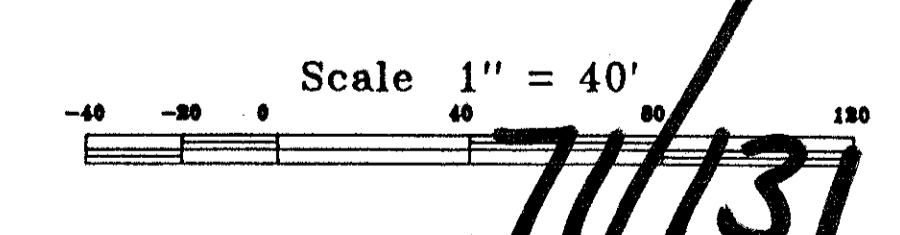
ABERDEEN-PLAT NO. 2
 (PLAT BOOK 55, PAGES 11 - 22)

ABERDEEN-PLAT NO. 2
 (PLAT BOOK 55, PAGES 11 - 22)

ABERDEEN-PLAT NO. 2
 (PLAT BOOK 55, PAGES 11 - 22)

**PET. 80-153
 ALLOC. #0001**

0270-019



SUBDIVISION * PLAT 17
 BOOK 71 PAGE 131
 RECORD BOOK B PLAT NO. 185A
 LEAD # 49 ZONING
 S.I. 33437
 ABERDEEN

Landmark Surveying & Mapping Inc.
 1850 FOREST HILL BOULEVARD
 PH. (407)433-5405 SUITE 100 W.P.B. FLORIDA

ABERDEEN - PLAT NO. 17